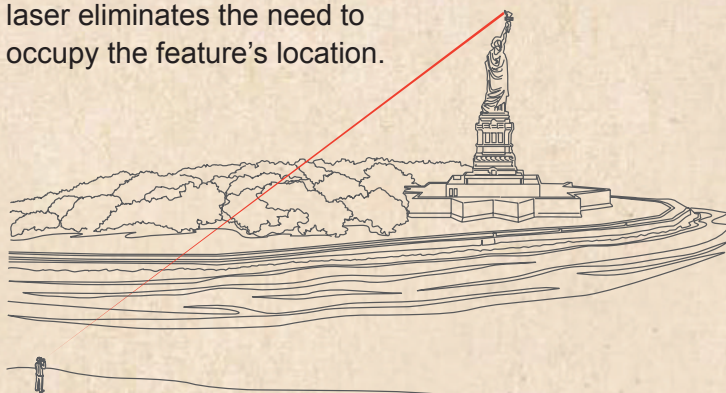


### ARCPAD USERS GET QUICK ROI

Simply put, time is money. New technology and software enhancements are great, but if they require extensive training, the ROI never seems to come quick enough. Since LaserGIS is built on ArcPad's current platform, the workflow is the same except the new LaserGIS toolbar makes the laser data collection process a lot quicker and easier.

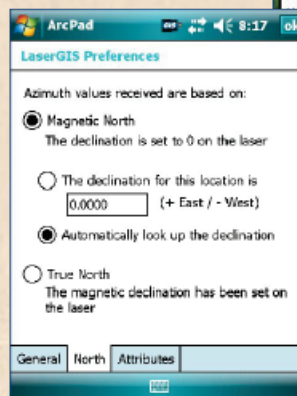
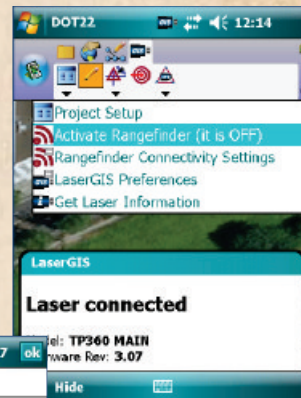
### LASER OFFSETS = MAXIMUM EFFICIENCY & SAFETY

Using an LTI TruPulse® compass laser eliminates the need to occupy the feature's location.



### INSTANTLY GET STARTED

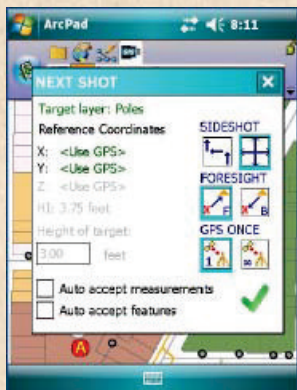
Activate, connect via Bluetooth® and set up your laser preferences in a matter of seconds.



Automatically apply the declination based on your map or GPS location.

### MANAGE YOUR NEXT SHOT

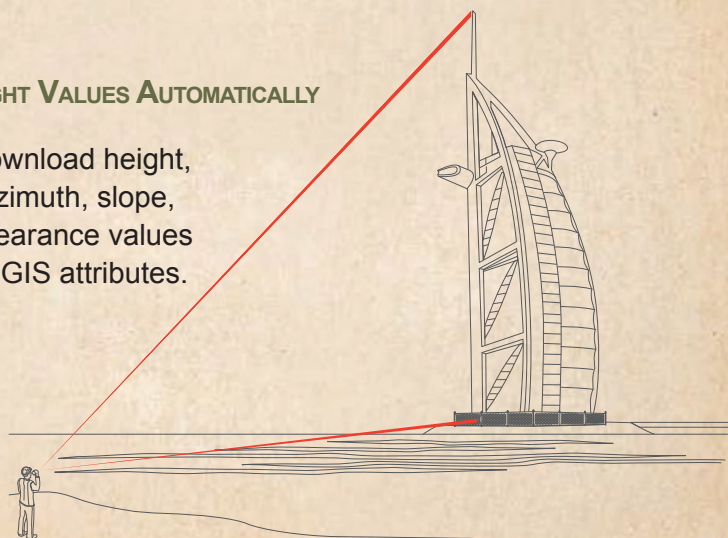
You can map in multiple objects from your one location, with or without GPS, or do a traverse by occupying the location of your last shot.



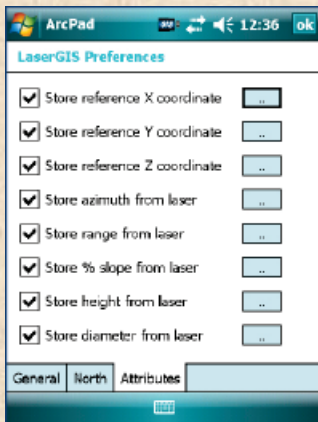
Expedite the process by auto accepting your measurements and features, and LaserGIS will collect all your data without you having to touch the screen.

### IMPORT HEIGHT VALUES AUTOMATICALLY

Instantly download height, distance, azimuth, slope, spans or clearance values within your GIS attributes.



LaserGIS simply expedites the process of storing the laser's positioning and measurements right into ArcPad with fewer steps and a clear understanding and control as to how you want to manage your next shot.

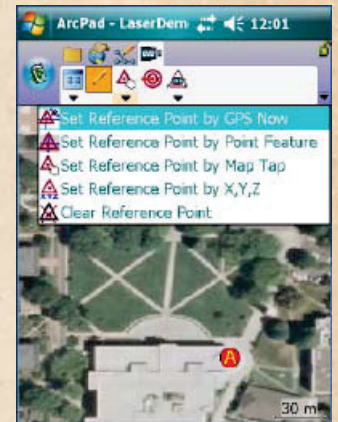


### STORE ALL YOUR LASER GIS & RAW DATA

All your laser data is collected in native ArcPad formats for immediate transfer into ArcGIS®. LaserGIS also automatically stores all the raw measurements that can be exported in a .raw file format.

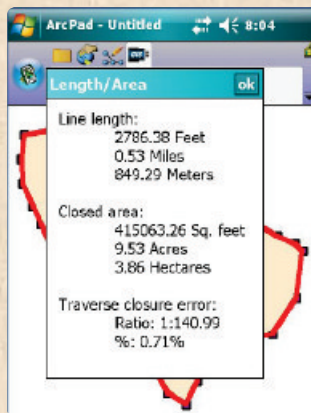
### CHOOSE ANY REFERENCE POINT OPTION

Use GPS or any feature on your map to set your reference point. You can also use a survey monument or even just tap on your map to get started.



### QUICK TRAVERSING

Use "Quick Traverse" to map and calculate an area as well as determine your % error of closure.



### LOCALIZATION TOOLKIT NOW AVAILABLE

German & French versions have just been released!



*"We were given the opportunity to assess the functionality of LTI's LaserGIS toolbar. We already adopted the use of LTI's TruPulse 360 laser for our field collection workflow using the current offset routine found on ESRI's ArcPad software. LaserGIS is truly a game changer. It not only eliminates steps within our workflow, but we were still able to preserve sub-foot accuracy throughout many of our projects. Being more productive in the field has made our company one of the most competitive GIS consultants in the area."*

George M. -- GIS Consultant